

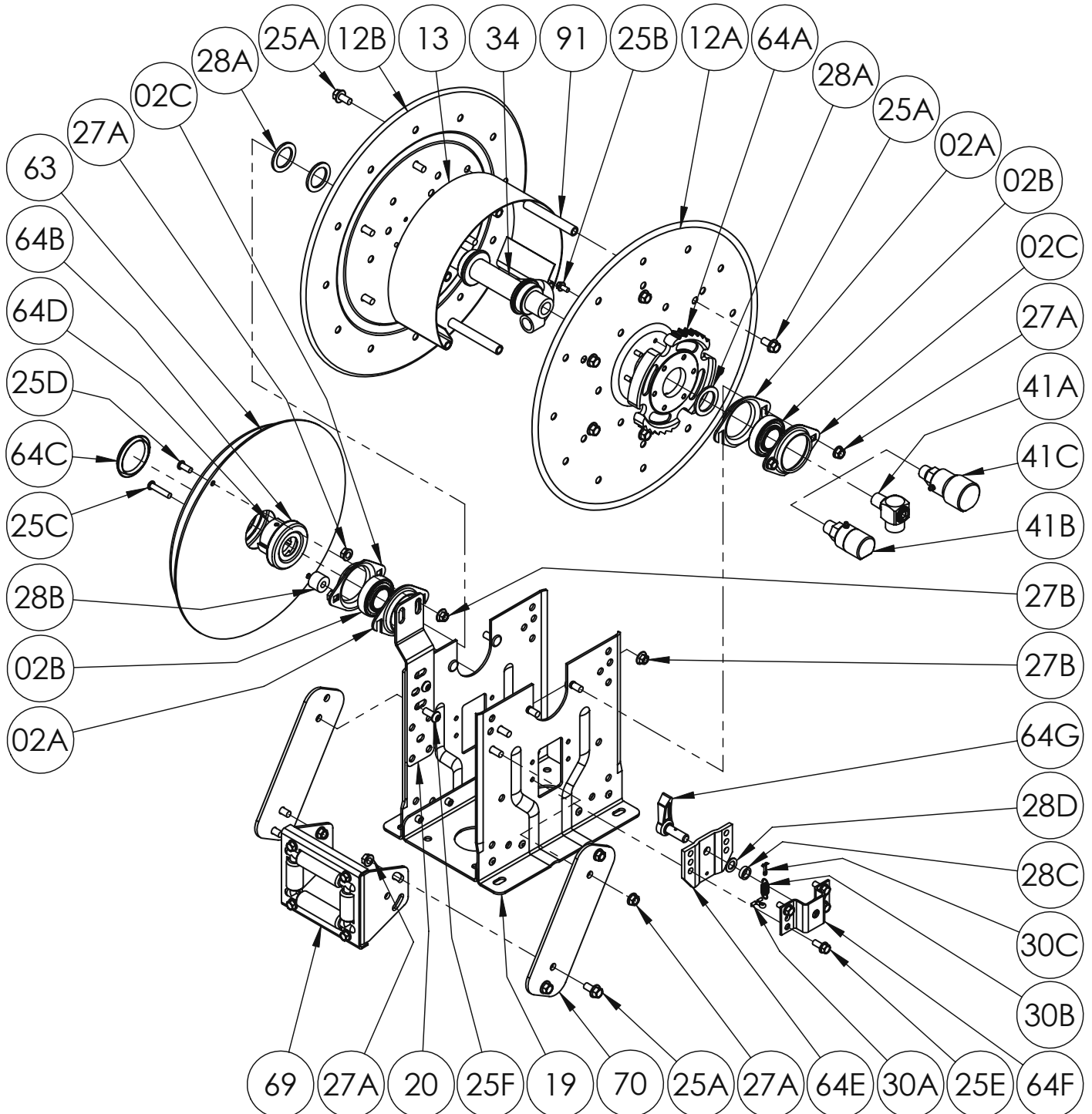


Hannay Reels®

The reel leader.

Hannay Reels, Inc., 553 State Route 143
Westerlo, NY 12193
Telephone 518-797-3791 • Toll Free 1-877-GO-REELS (467-3357)
FAX 1-800-REELING (733-5464)
INT'L FAX (518) 797-3259
Website: www.hannay.com
E-mail: reels@hannay.com

ISO 79 PARTS LIST N-700 SERIES Spring Retractable Reels For Single Hose



PARTS LIST
ISO 79
N-700 SERIES

When ordering parts

BE SURE TO SPECIFY COMPLETE MODEL NUMBER and SERIAL NUMBER OF REEL.

USE PART NUMBER!

| Item No. | Description | PART NUMBER | Quantity |
|----------|---|-------------|-------------|
| 02A | Self Aligning Bearing Holder (Slotted), per P02A-00090 (Steel E-Coated) | 9902.2801 | 2 |
| 02B | 1" Self Aligning Bearing Insert (Plated) | 9902.1500 | 2 |
| 02C | Self Aligning Bearing Holder, per P02A-00080 (Steel E-Coated) | 9902.2800 | 2 |
| 02D | 1" Self Aligning Bearing for N Series Complete (Items 02A, 02B and 02C) | 9902.2600 | 2 |
| 12A | Front Disc | Spec Model | 1 |
| 12B | Back Disc (Includes Disc Washer for 23-24 and larger Discs) | Spec Model | 1 |
| 13 | 10-1/2" Diameter 304 SST Wrap Around Drum (Specify Model) | 9905.0138 | 1 |
| 13 | 15-1/2" Diameter 304 SST Wrap Around Drum (Not Shown) (Specify Model) | 9905.0178 | 1 |
| 13 | 8" Diameter 304 SST Wrap Around Drum (Not Shown) (Specify Model) | 9905.0128 | 1 |
| 19 | N Series Spring Reel Frame Assembly | Spec Model | 1 |
| 20 | N Series Spring Mounting Bracket, per P20A-00280 (for "B", "G" & "J" Springs) | 9922.0050 | 1 |
| 25A | 3/8"-16 x 3/4" Spinlock Bolt | 9904.2201 | 9, 16 or 24 |
| 25B | 1/4"-20 x 1/2" Spinlock Bolt (Ratchet Wheel) | 9904.1058 | 6 |
| 25C | 5/16"-18 x 1-1/2" Hex Socket Button Head Screw (For "J" & "C" Springs) | 9904.9104 | 1 or 2 |
| 25D | 5/16"-18 x 3/4" Hex Socket Button Head Screw (For "J" Spring) | 9904.9101 | 1 |
| 25E | 5/16"-18 x 3/4" Thread Cutting Hex Head Bolt (For Ratchet Locking Ass'y) | 9958.0055 | 4 |
| 25F | 3/8"-16 x 7/8" Socket Head Cap Screw | 9904.9201 | 4 |
| 25G | 3/8"-16 x 1-1/2" Spinlock Bolt (For "B" & "G" Springs) (Not Shown) | 9904.2204 | 2 |
| 25H | 3/8"-16 x 3/4" Spinlock Bolt (For "B" & "G" Springs) (Not Shown) | 9904.2201 | 2 |
| 25I | 1/4"-20 x 3/4" Spinlock Bolt (Ratchet Wheel) (8" Drum Reels Only) (Not Shown) | 9904.1060 | 6 |
| 25J | 3/8"-16 x 3/4" Hex Head Cap Screw (8" Drum Reels Only) (Not Shown) | 9904.1201 | 5 |
| 27A | 3/8"-16 Spinlock Nut | 9904.6200 | 12 or 16 |
| 27B | 5/16"-18 Large Flange Spinlock Nut (For "J" & "C" Springs) | 9904.6100 | 2 |
| 28A | 1-7/8" O.D. x 1-5/16" I.D. x 1/8" Thick Hub Spacer, per P28A-00360 (Plastic) | 9954.0021 | 3 or 5 |
| 28B | Spring Spacer, per P28A-00070 (For "C" and "J" Springs) | 9922.0033 | 1 |
| 28C | Plastic Ratchet Pawl Spacer, per P28A-00300 | 9922.0022 | 1 |
| 28D | Stainless Steel Ratchet Pawl Washer, per P28A-00820 | 9922.0061 | 1 |
| 28E | Oval Spring Spacer, per P28A-00020 (For "B" & "G" Springs) (Not Shown) | 9922.0032 | 1 |
| 28F | 1/2" Thick Spring Spacer, per P28A-00330 (For "C" Spring) (Not Shown) | 9954.0015 | 1 |
| 28G | 3/8" Flat Washer (For "C" Spring) (Not Shown) | 9954.0007 | 1 |
| 29 | Woodruff Key #9 for Spring Arbor (3/16" x 3/4") (Not Shown) | 9916.0080 | 1 |
| 30A | 3/16" x 3/4" Stainless Steel Cotter Pin for N Series Ratchet | 9922.0028 | 1 |
| 30B | Ratchet Pawl Spring | 9922.0008 | 1 |
| 30C | 1/8" x 1" Stainless Steel Cotter Pin for Ratchet Pawl | 9922.0024 | 1 |
| 34 | 1/2" Welded Barstock Hub Assembly (Specify Model and Fittings) | 9901.0631 | 1 |
| 34 | 1/2" SST Welded Barstock Hub Assembly (Specify Model and Fittings) | 9901.0634 | 1 |
| 41A | 1/2" 90 Degree MxF Balanced Pressure Swivel Joint 3000 PSI, BUNA | 9927.8138 | 1 |
| 41B | 1/2" 90 Degree MxF Full Flow Swivel Joint 5000 PSI, AFLAS | 9927.8151 | 1 |
| 41B | 1/2" 90 Degree Oxygen SST MxF Full Flow Swivel Joint 3000 PSI, VITON | 9927.8577 | 1 |
| 41C | 1/2" 90 Degree MxF Oxygen Full Flow Swivel Joint 6000 PSI, VITON | 9927.8177 | 1 |
| 63 | "J" Spring w/ Arbor (Item 64D) | 9921.0030 | 1 |
| 63 | "B" Spring w/ Arbor (Item 64D) (Not Shown) | 9921.0015 | 1 |
| 63 | "G" Spring w/ Arbor (Item 64D) (Not Shown) | 9921.0021 | 1 |
| 63 | "C" Spring w/ Arbor (Item 64D) (Not Shown) | 9921.0018 | 1 |
| 64A | Ratchet Wheel and Hardware (Item 25B), per P64A-00120 | 9922.0015 | 1 |
| 64B | Dust Cap for Inner Spring Side | 9922.0036 | 1 |
| 64C | Dust Cap for Outer Spring Side | 9922.0037 | 1 |
| 64D | Spring Arbor, per P64A-00110 (For "B", "G", "J" or "C" Springs) | 9922.0002 | 1 |
| 64E | Ratchet Pawl Housing (Inner) per P64A-00070 | 9922.0027 | 1 |
| 64F | Ratchet Pawl Housin (Outer) per P64A-00080 | 9922.0026 | 1 |
| 64G | Right Hand Ratchet Pawl & Pin (Item 30C) | 9922.0302 | 1 |
| 64G | Left Hand Ratchet Pawl & Pin (Item 30C) (For Reverse Springs ONLY) | 9922.0301 | 1 |
| 64H | Right Hand Ratchet Locking Assembly Complete | 9922.0312 | 1 |
| 64H | Left Hand Ratchet Locking Assembly Complete (For Reverse Springs ONLY) | 9922.0311 | 1 |
| 69 | N204 Complete Roller Assembly for Model N716 | 9939.0111 | 1 |
| 69 | N203 Complete Roller Assembly for Model N715 (Not Shown) | 9939.0110 | 1 |
| 69 | N206 Complete Roller Assembly for Model N718 (Not Shown) | 9939.0113 | 1 |
| 70 | N Series Single Roller Arm (Specify Model) | 9941.0030 | 2 |
| 91 | 4" Long Anodized Threaded Spacer Pipe for Model N716 | 9904.0308 | 5, 6 or 10 |
| 91 | 3" Long Anodized Threaded Spacer Pipe for Model N715 (Not Shown) | 9904.0306 | 5, 6 or 10 |
| 91 | 6" Long Anodized Threaded Spacer Pipe for Model N718 (Not Shown) | 9904.0312 | 5, 6 or 10 |